

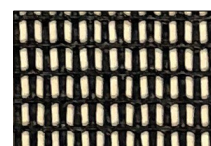


✓ Vóór 13.00u besteld, morgen geleverd in NL (in BE overmorgen)

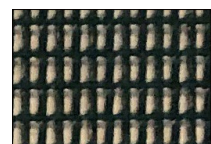
✓ Deskundig advies ✓ Levering franco huis vanaf € 675,-

Technische gegevens PVC gecoat doek Sioen L634221SE

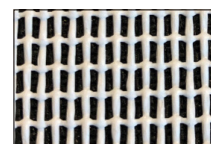
| | | | |
|--|--------------------------|----------------|-----------------------------|
| Weefsel | | 100 % PES | |
| Binding | | 1/1 LENO WEAVE | |
| Coating | | PVC | |
| Rollengte | mtr. | 100 | |
| Breedte | cm. | 250 | |
| Gewicht | g/m ² | 230 | EN ISO 2286/2_2016 |
| Binding | Ketting | 3,1 thr/cm | |
| | Inslag | 6 thr/cm | |
| Samenstelling | Doek g/m ² | 130 | EN ISO 2286/2_2016 |
| | Coating g/m ² | 100 | EN ISO 2286/2_2016 |
| Treksterkte | Ketting | 1000 N/5 cm | NBN EN ISO 1421_2017 |
| | Inslag | 1600 N/5 cm | NBN EN ISO 1421_2017 |
| Rek | Ketting | > 15 % | NBN EN ISO 1421_2017 |
| | Inslag | > 15 % | NBN EN ISO 1421_2017 |
| Scheurweerstand 200°C / 10 min. | Ketting | - | DIN 53354 1981 |
| | Inslag | - | DIN 53354 1981 |
| Dikte | mm | 0,65 [+/-0,05] | EN ISO 2286/3_2016 |
| Temperatuur best. | °C | -30 /+70 | DIN EN 1876/2 1998 |
| Windreductie | | 73 % | |
| Lichtechtheid | | 6 - 8 | |
| Onbrandbaarheid | | M2 | NF P 92-507:2004/DIN 4102-1 |



Zwart



Groen



Wit